

POWERFLEX®

PART NUMBER

PFF30-325

DESCRIPTION

ENGINE MOUNT RIGHT BUSH

INSTALLATION GUIDE

Contents (parts per pack):

- | | |
|--------------------------------------|-------------------------------|
| 1 x Polyurethane A Bush | 1 x PTFE/Silicone Grease |
| 1 x Polyurethane B Bush | 1 x Stainless Steel Sleeve |
| 1 x Zinc Plated Steel Washer | 1 x Zinc Plated Steel Bracket |
| 1 x Zinc Plated Steel Stepped Washer | |

Please read the complete fitting instructions and check package components before fitment. These fitting instructions are to be used as a guide and in conjunction with workshop manual.

It is recommended that:

- all work to be carried out by a licensed technician;
- all safety precautions adhered to;
- wheel alignment to be checked and adjusted as required after any suspension work.
- All fasteners must be tensioned to manufacturer's torque settings.



Fitting Instructions:

1. Support the engine and remove the original engine mount, retaining the original nuts and bolts.
2. Push the 30-325B LOWER polyurethane part up into the steel bracket, smaller radius facing upwards.
3. Insert the steel washer into the recess at the bottom of 30-325B LOWER.
4. Place the 30-325A UPPER polyurethane part on top of the bracket.
5. Insert the steel sleeve into the top of the polyurethane part until it sits flush within.
6. Place the steel stepped washer on top of the 30-325A UPPER polyurethane part, with the step facing upwards.
7. Attach the bracket to the car using the original nuts and bolts and tension all hardware to manufacturers recommended torque settings.

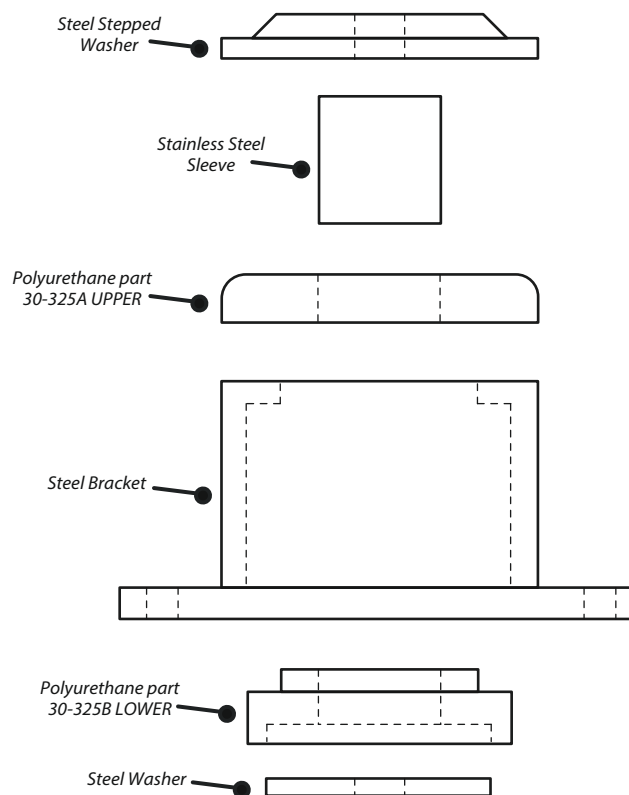


Figure 1